

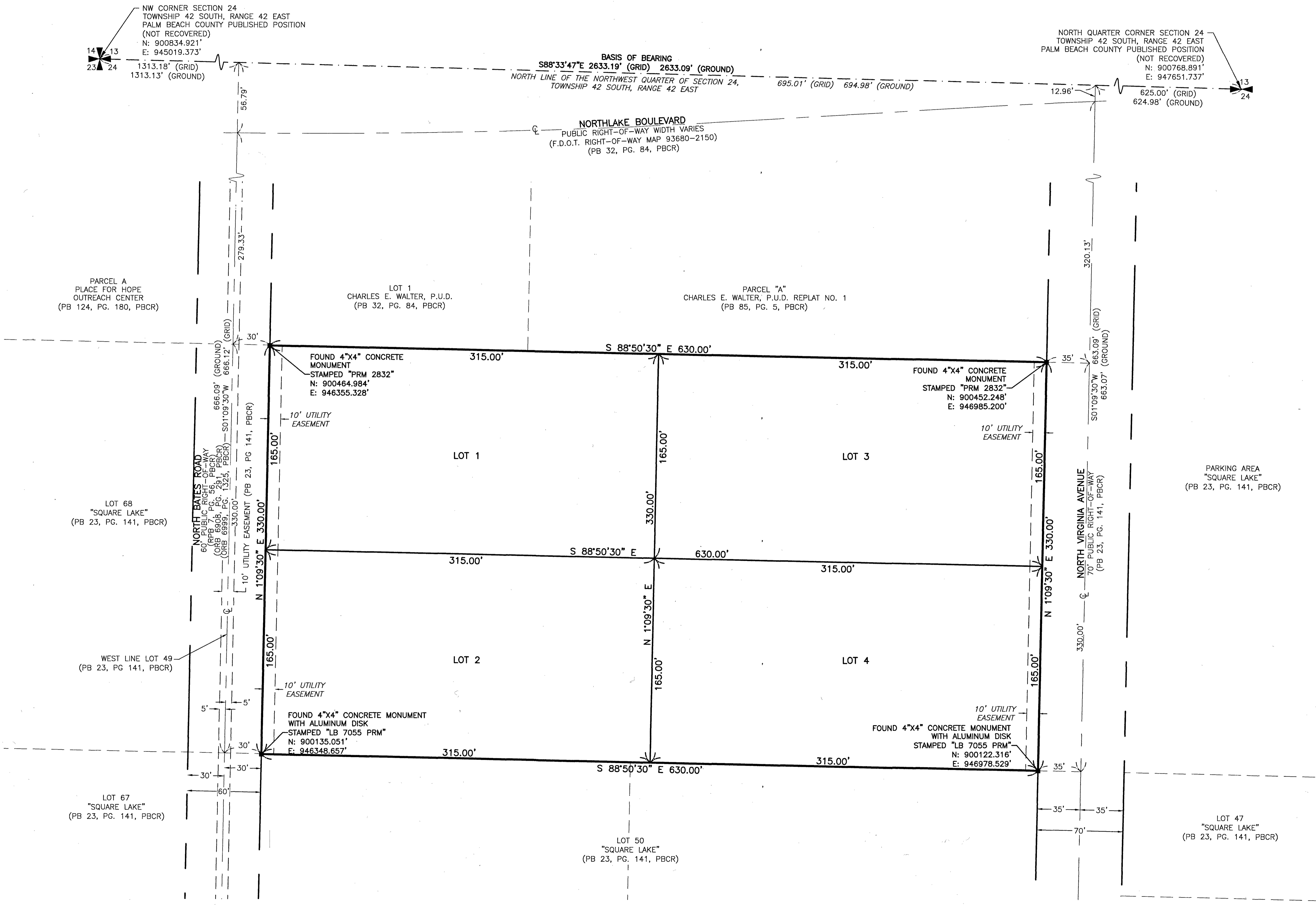
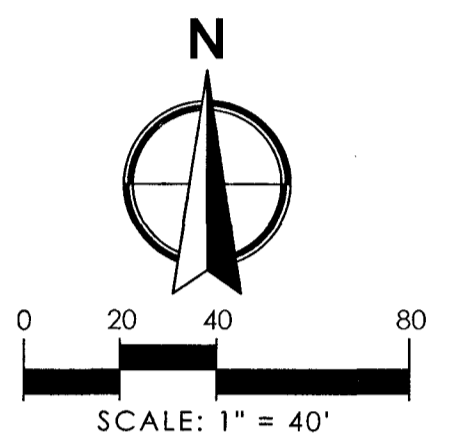
NORTH BATES SUBDIVISION

BEING A REPLAT OF A PORTION OF LOT 49, OF THE PLAT OF SQUARE LAKE, AS RECORDED IN PLAT BOOK 23, PAGE 141 OF THE PUBLIC RECORDS OF PALM BEACH COUNTY, FLORIDA, LYING AND SITUATE IN SECTION 24, TOWNSHIP 42 SOUTH, RANGE 42 EAST, PALM BEACH COUNTY, FLORIDA.

JANUARY 2025

18

SHEET 2 OF 2



LEGEND

- FND. = FOUND
- F.D.O.T. = FLORIDA DEPARTMENT OF TRANSPORTATION
- ORB = OFFICIAL RECORDS BOOK
- PBCR = PALM BEACH COUNTY RECORDS
- PCN = PARCEL CONTROL NUMBER
- PG. = PAGE
- PB = PLAT BOOK
- PRM = PERMANENT REFERENCE MONUMENT
- RPB = ROAD PLAT BOOK
- R/W = RIGHT-OF-WAY

NOTE

COORDINATES SHOWN ARE GRID COORDINATES
 DATUM - NAD 83 (1990 ADJUSTMENT)
 STATE PLANE FLORIDA EAST ZONE
 TRANSVERSE MERCATOR PROJECTION
 LINEAR UNIT = U.S. SURVEY FEET
 ALL DISTANCES ARE GROUND UNLESS OTHERWISE NOTED
 SCALE FACTOR = 1.00003789
 PLAT BEARING = GRID BEARING
 GROUND DISTANCE X SCALE FACTOR = GRID DISTANCE



2035 VISTA PARKWAY, WEST PALM BEACH, FL 33411
 PHONE NO. 866.909.2220 www.wginc.com
 CERT NO. 6091 - LB NO. 7055
 THIS INSTRUMENT WAS PREPARED BY ERIC MATTHEWS, P.S.M.
 PROFESSIONAL SURVEYOR AND MAPPER, LICENSE NO. 6717
 FOR THE FIRM: WGI, INC.